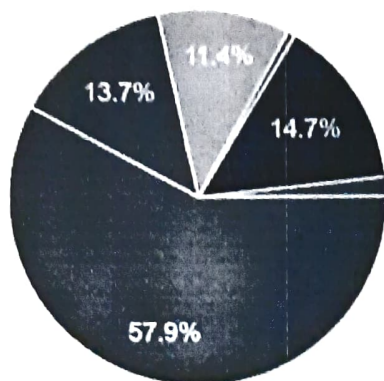


STUDENT FEEDBACK REPORT

Total Respondent with their stream (299)

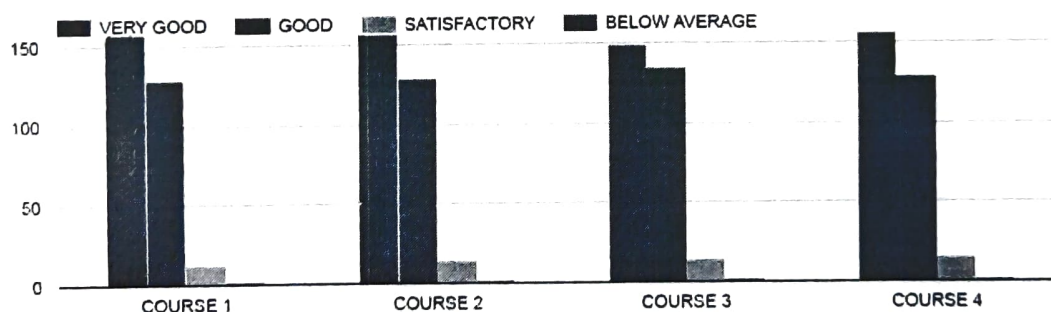


- B.A. HONOURS
- B.A. PROGRAM
- B.Sc. HONOURS
- B.Sc. PROGRAM
- B.Com. HONOURS
- B.Com. PROGRAM

QUESTIONNAIRE 1 - STUDENT FEEDBACK ON COURSE CONTENT



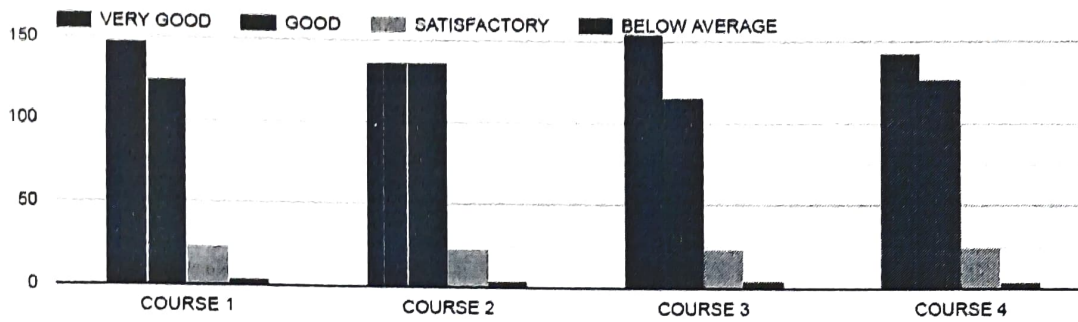
RATE ON: Depth of the course content including project work if any



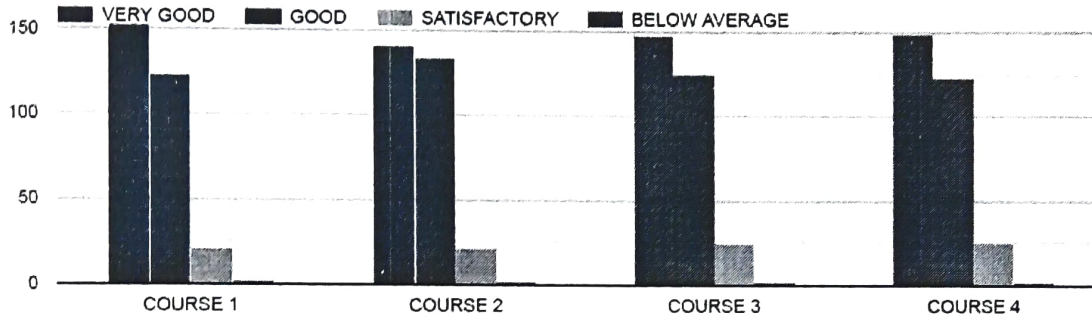
RATE ON: Extent of coverage of course



RATE ON: Applicability/ relevance to real-life situations



4. RATE ON: Learning value (in terms of knowledge, concepts, manual skills, analytical abilities and broadening perspectives)



RATE ON: Clarity and relevance of textual reading material



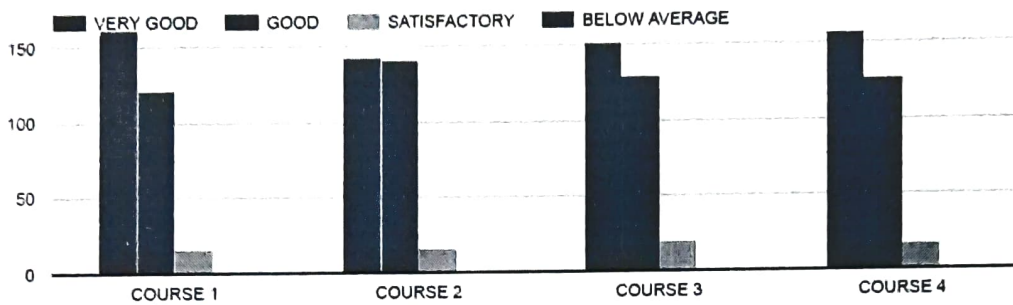
RATE ON: Relevance of additional source material (Library)



RATE ON: Extent of effort required by students

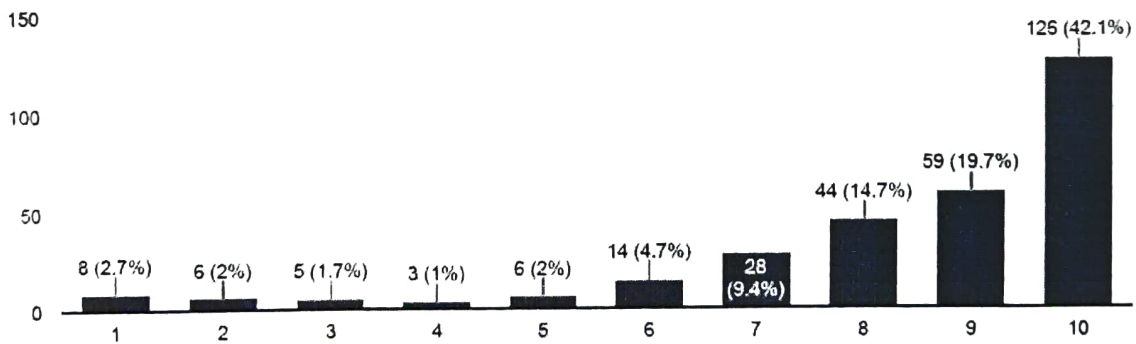


RATE ON: OVERALL RATING ON ALL OF THE ABOVE ATTRIBUTES

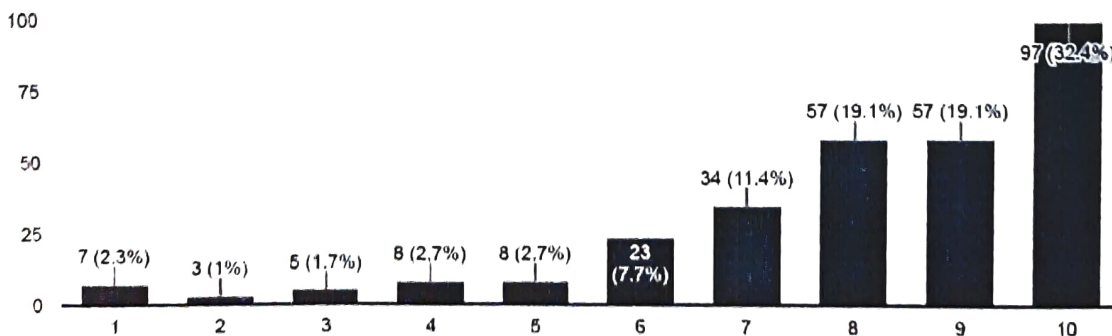


QUESTIONNAIRE 2 - STUDENT FEEDBACK ON TEACHERS

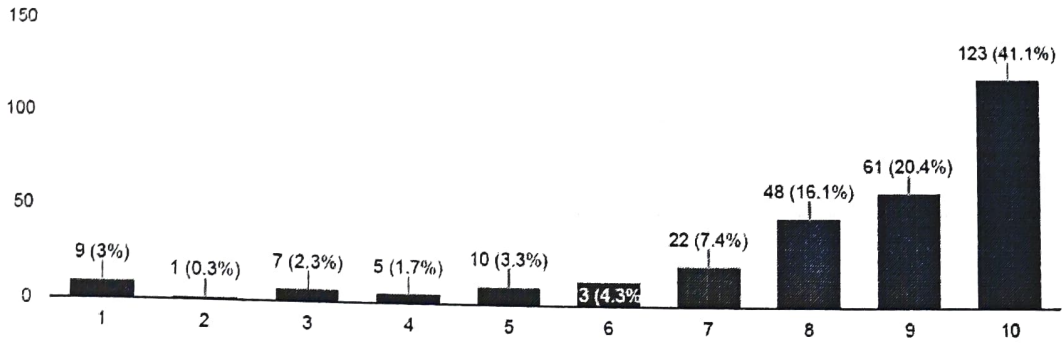
RATE ON: Knowledge base of the teachers (as perceived by you)



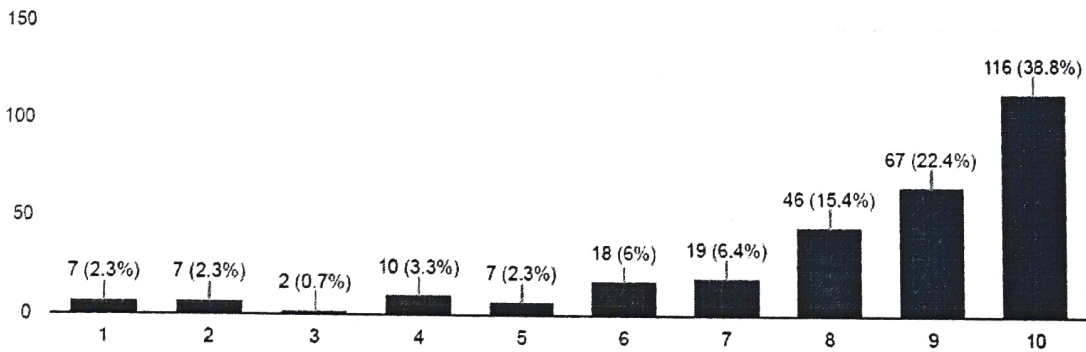
RATE ON: Communication Skills (in terms of articulation and comprehensibility)



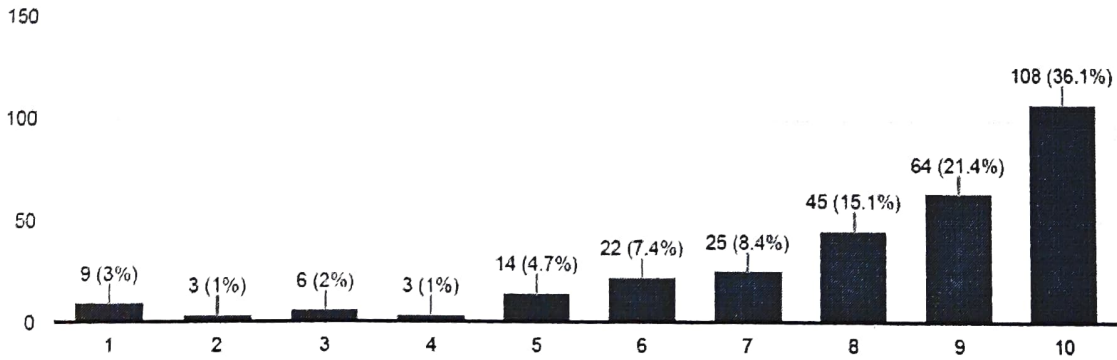
RATE ON: Sincerity / Commitment of the teachers



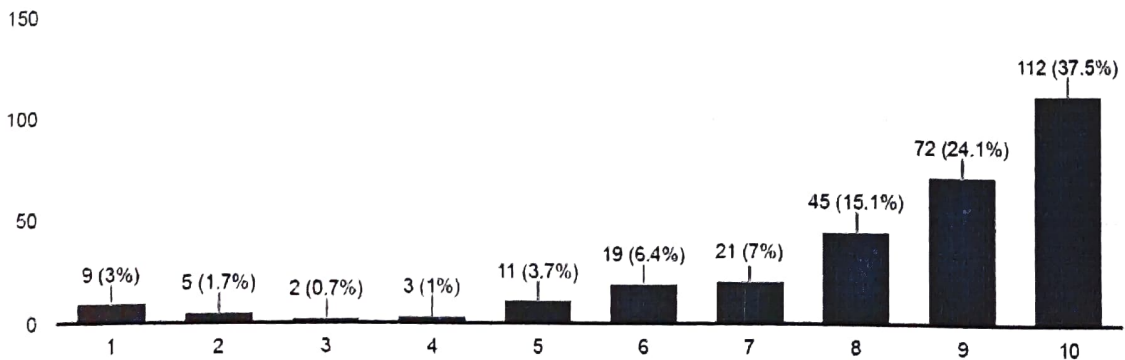
RATE ON: Interest generated by the teacher



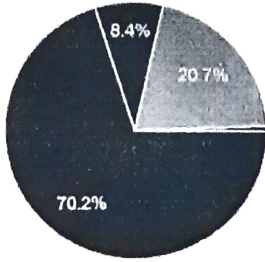
5. RATE ON: Accessibility of the teacher in and out of the class (includes availability of the teacher to motivate further study and discussion outside class)



RATE ON: OVERALL RATING ON ALL OF THE ABOVE ATTRIBUTES

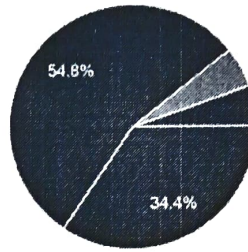


The syllabus of each course was



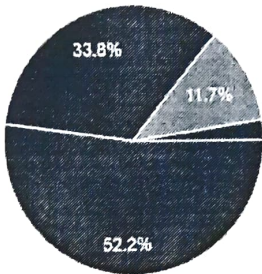
- Adequate
- Inadequate
- Challenging
- Dull

Background for benefiting from the course was



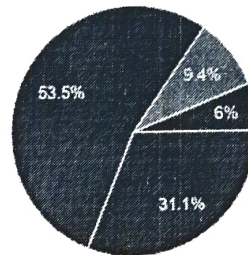
- More than adequate
- Adequate
- Inadequate
- Cannot say

How much of the syllabus was covered in the class?



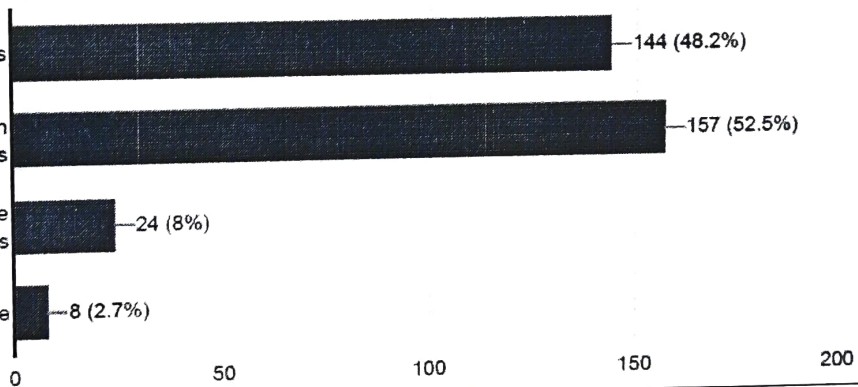
- 100 % to 85 %
- 85 % to 70 %
- 70 % to 55 %
- Less than 55 %

What is your opinion about the library material and facilities for the course?



- More than adequate
- Adequate
- Inadequate
- Very poor

Encouraged to raise questions

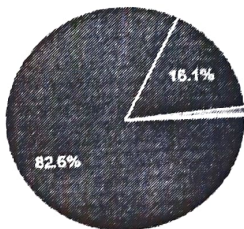


Get involved in discussion in class

Encourage discussion outside class

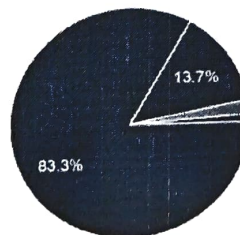
Did not encourage

How helpful was the teacher in advising?



- Very helpful
- Sometimes helpful
- Not at all helpful
- Did not advise

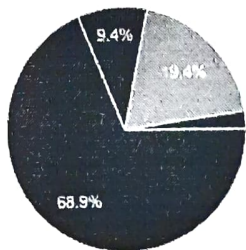
Internal assessment was



- Always fair
- Sometimes fair
- Sometimes unfair
- Usually unfair

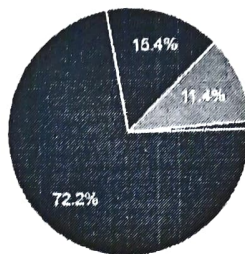


How often did the teacher provide feedback on your performance?



- Regularly/In time
- Often/late
- With helpful comments
- Without any comments

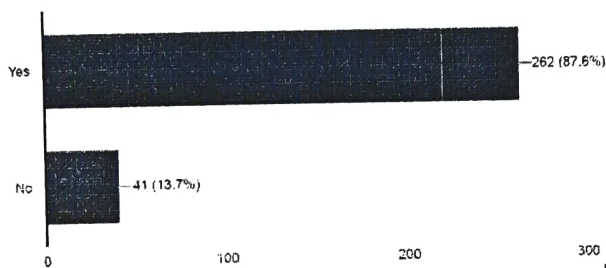
Were your assignments discussed with you?



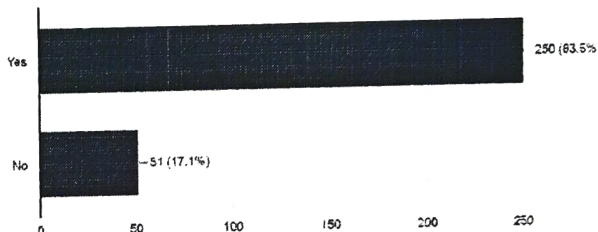
- Yes, fully
- Yes, partly
- Sometimes discussed
- Not discussed at all

QUESTIONNAIRE 4 - STUDENT'S EVALUATION OF THE PROGRAM OF STUDY

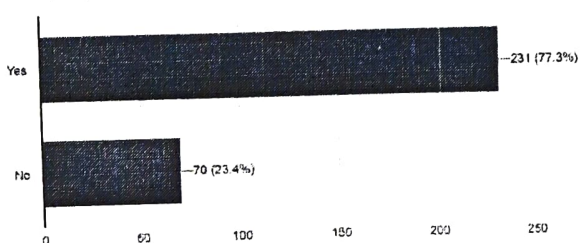
Before undertaking the programme did you get a prospectus?



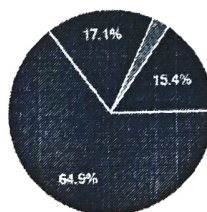
2. Did the prospectus have details on completion requirements, support services and training available?



Did the prospectus have details on refund structure and financial aid available?

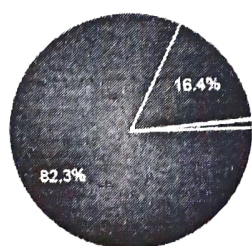


What determined your choice of the subject?



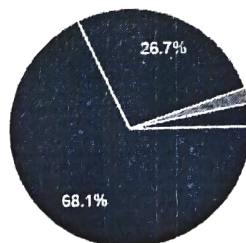
- Interest in the subject and past scores in the subject
- Influence of parents/ friends/ teachers and reputation of the department/ teachers
- Ease of getting admission and easy to pass
- Suitable for getting a job after completion of higher education

The choice of courses offered was



- Very good
- Just satisfactory
- Not satisfactory
- Inevitable

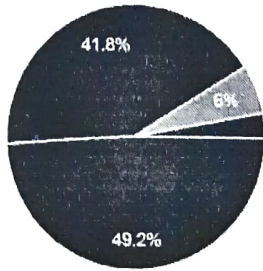
Were the laboratories /studios/workshops adequately equipped and properly maintained?



- Yes, fully
- Yes, partially
- Not well equipped
- Not well maintained

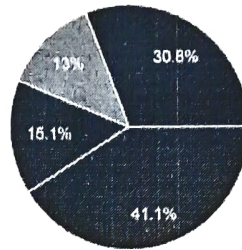


What is your opinion of the library materials for your subject?



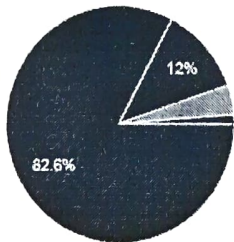
- Excellent
- Adequate
- Inadequate
- Very poor

Were you provided with training in use of computer?



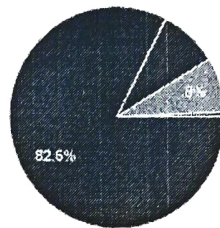
- Yes, fully
- Yes, to some extent
- Sometimes
- Not at all

The internal evaluation system as it exists is



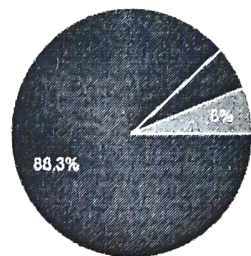
- Good
- Needs some change
- Needs radical change
- Should not be there

The internal assessment system operated



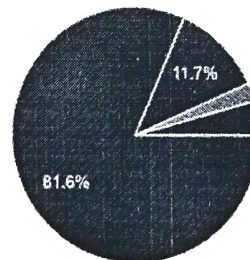
- Is fair
- Is biased
- Needs some improvement
- Needs radical improvement

The internal assessment was done



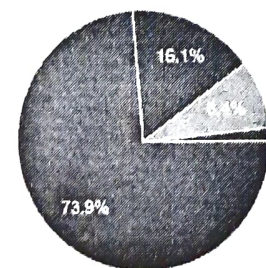
- Regularly
- Irregularly
- Only at term end
- Not done at all

Were your corrected / evaluated written assignments returned on time?



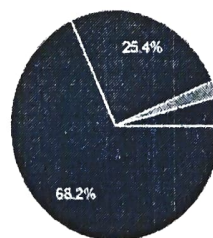
- Yes, always
- Yes, sometimes
- Never on time
- never returned

Did the department have provision to take care of student grievances?



- Yes, fully
- Yes, partially
- Sometimes
- Not existing

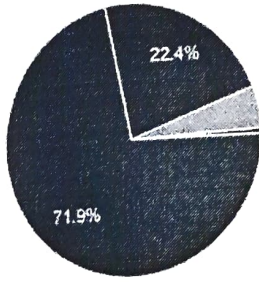
At the end of the programme of study you emerged



- Better informed and skilled
- More enthusiastic for further study
- Less enthusiastic for further study
- Can not say

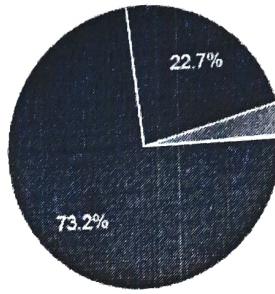


How do you rate the student-teacher relationship in your institution as a whole?



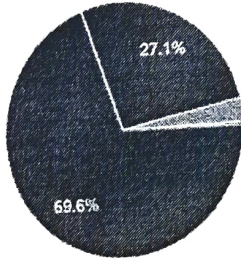
- Very good
- Good
- Satisfactory
- Poor

How do you rate the student-teacher relationship in your specific department?



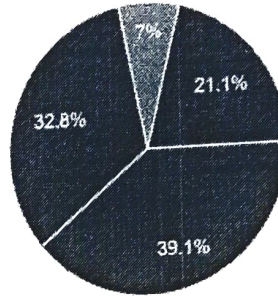
- Very good
- Good
- Satisfactory
- Poor

How do you find the institution's administration?



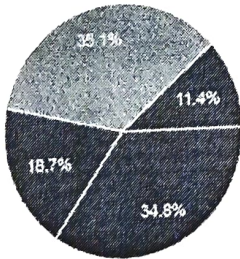
- Always helpful
- Generally helpful
- Indifferent
- Cumbersome

Did you participate in any of the extra curricular activities of the department/institution?



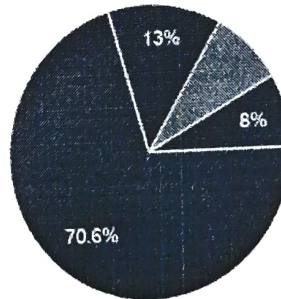
- Often
- Sometimes
- Rarely
- Never

What was your relationship with the Students' Union?



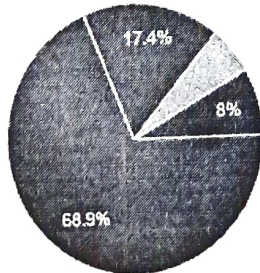
- Elected member
- Office bearer
- Voter only
- Leader

Was the Students' Union a true representative of the student community?



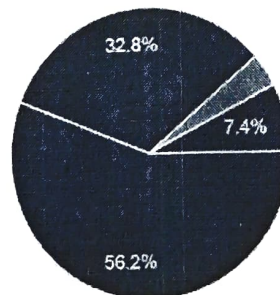
- Yes
- Largely
- Marginally
- No

Has your time at the institution been intellectually enriching?



- Yes
- Marginally
- Not at all
- Can not say

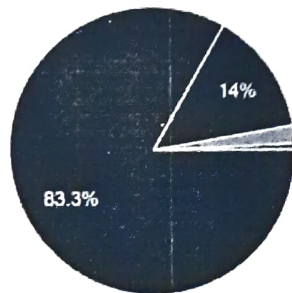
Have you made friends with anyone, which you expect will last long?



- With many
- With a few
- With One
- With none



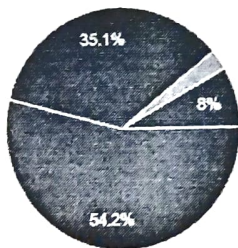
After leaving how will you talk about your institution ?



- Proudly
- Just satisfactorily
- Indifferently
- Hatefully

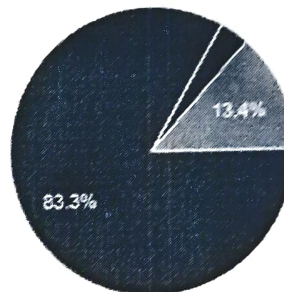
QUESTIONNAIRE 5 - STUDENT'S OVERALL RATING OF THE PROGRAM OF STUDY

What do you plan to do after completion of the programme?



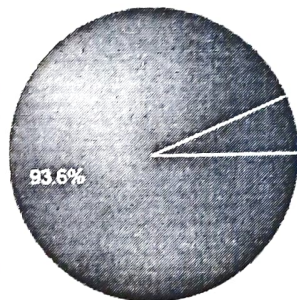
- HIGHER STUDIES
- JOB
- SELF BUSINESS
- OTHERS

Was the advice received from your adviser helpful and was it timely?



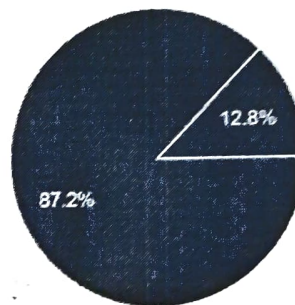
- Yes
- No
- Maybe

Were your expectations from the department adequately satisfied?



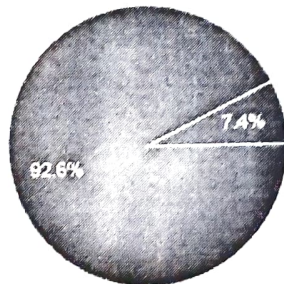
- Yes
- No

Have you made lasting friendship with anyone in the department?



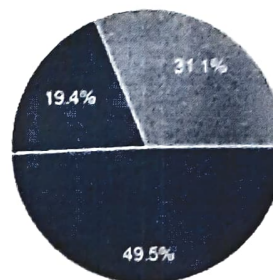
- Yes
- No

Would you like to keep in touch with the department after you leave it?



- Yes
- No

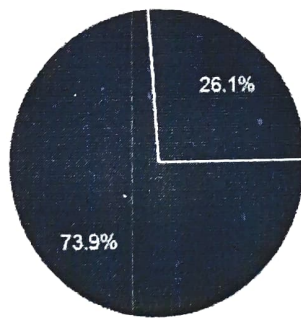
Will you join the Alumni Association of the department / institution?



- Yes
- No
- Maybe




11. Were you provided help and training in the use of library and computer services and was the training useful?




● Yes
● No

Student Feedback Summary and Action taken Report

1. Students proposed for new courses on Human rights, Financial service, Biotechnology etc.	Discussed and forwarded to Governing Body for consideration.
2. They gave proposal to enrich the book numbers of the library as well as increase the book number for lending in favour of a single card.	In present COVID situation IQAC decided to enrich the E-resource in College website.


 31.08.2021
 Co-Ordinator
 Internal Quality Assurance Cell (IQAC)
 Bidhan Chandra College
 Asansol - 4




 Principal
 Bidhan Chandra College
 Govt. Sponsored
 P.O, Asansol, Dist- Burdwan