

# **Taenia solium**

**SEM- VI, DSE-3**

Sreenita Ghosh

Department of Zoology, B. C. College , Asansol.

---



INTRODUCTION



MORPHOLOGY



LIFE CYCLE



CLINICAL FEATURES



DIAGNOSIS



TREATMENT



KINGDOM  
**ANIMALIA**

PHYLUM **PLATI**  
**HELMENTHIS**

CLASS  
**CESTODA**

ORDER  
**CYCLOPHYLLIDEA**

FAMILY **TAENIIDAE**

GENUS **TAENIA**

SPECIES **SOLIUM**

---

# Introduction



- Triploblastic acoelomate



- Pork tapeworm
- Intestinal zoonotic parasite



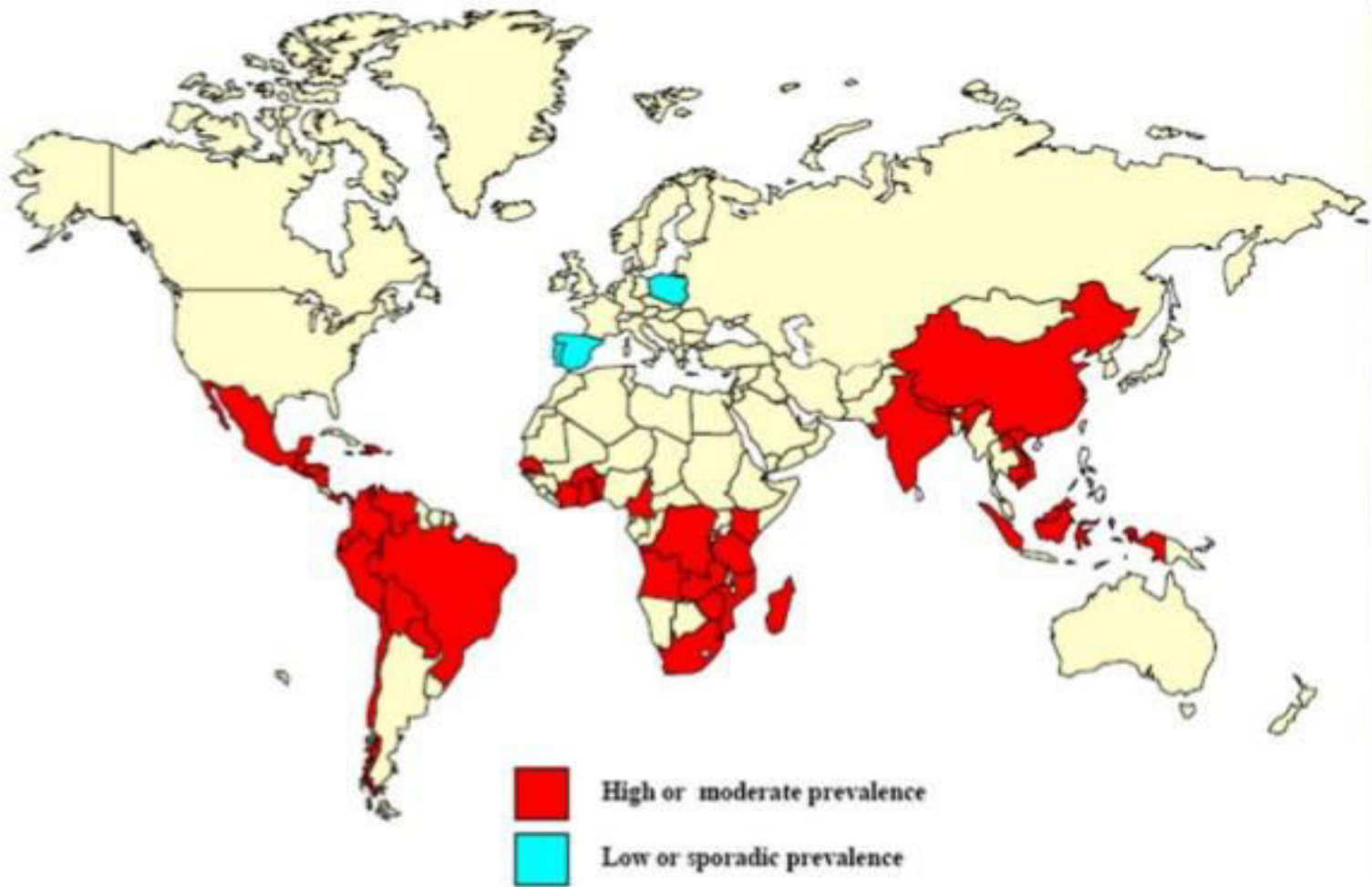
- Adult worm lives in human intestine
- Larval form (Cysticercus cellulose) in pig



- Most common in Latin America, Africa and India - 400,000 people have symptomatic neurocysticercosis in Latin America





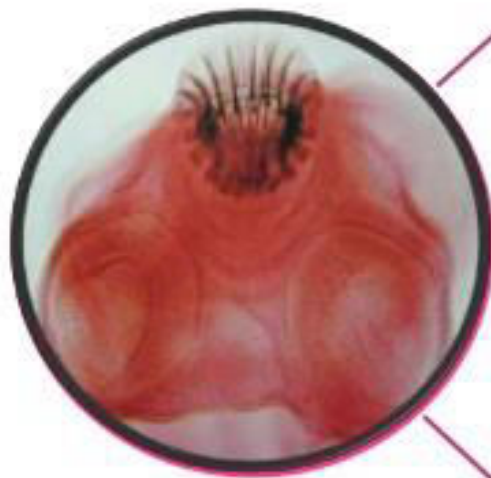


# Prevalence

# MORPHOLOGY

- Adult is flattened ribbon-like, creamy white in color, measures about 2-4 m .





## SCOLEX

- 4 suckers, 1 rostellum
- 25-50 hooklets arranged in a double crown
- Organ of attachment

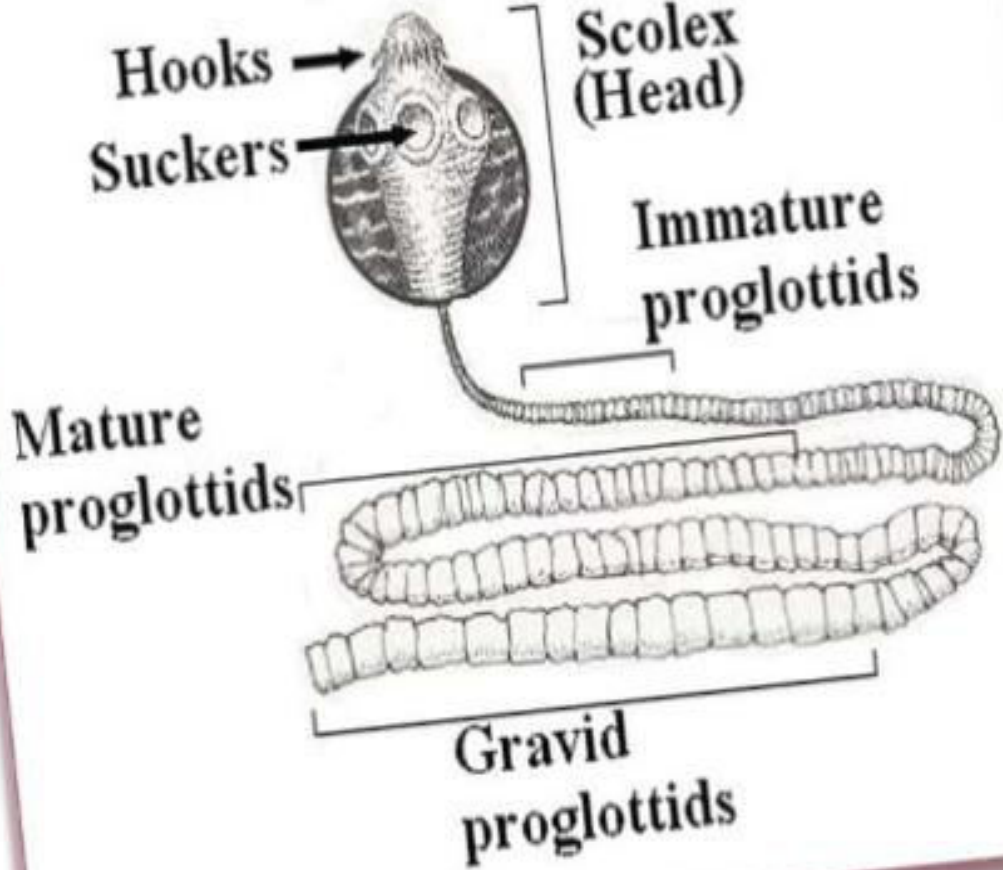
## NECK

- narrowest part of the body
- Budding zone containing germinative tissue

## STROBILA

- immature proglottides: width > length
- mature proglottides: width = length
- gravid proglottides: width < length
- Each proglottid is a complete reproductive unit
- Tegument-villi-nutrition

**Taenia solium**



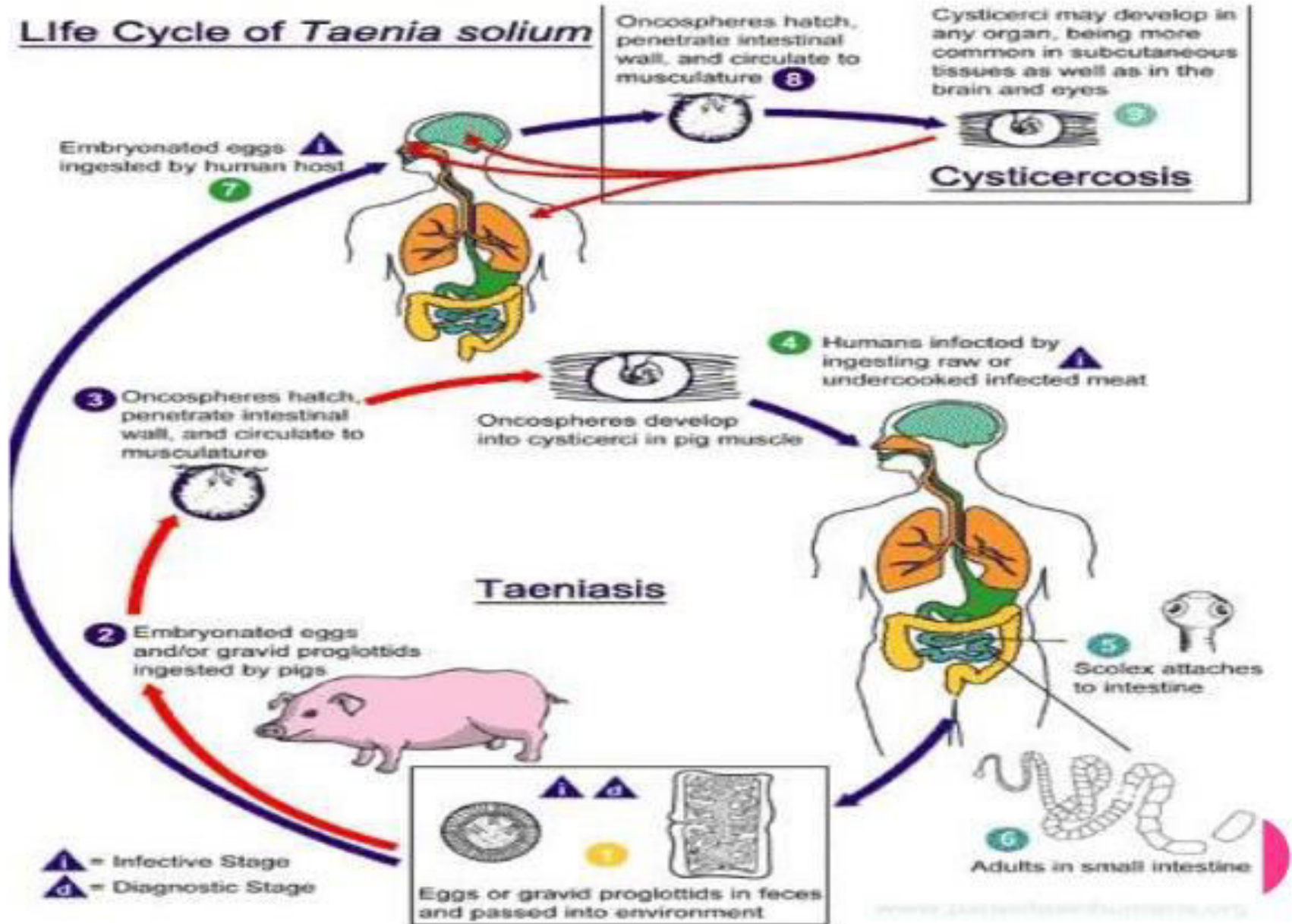


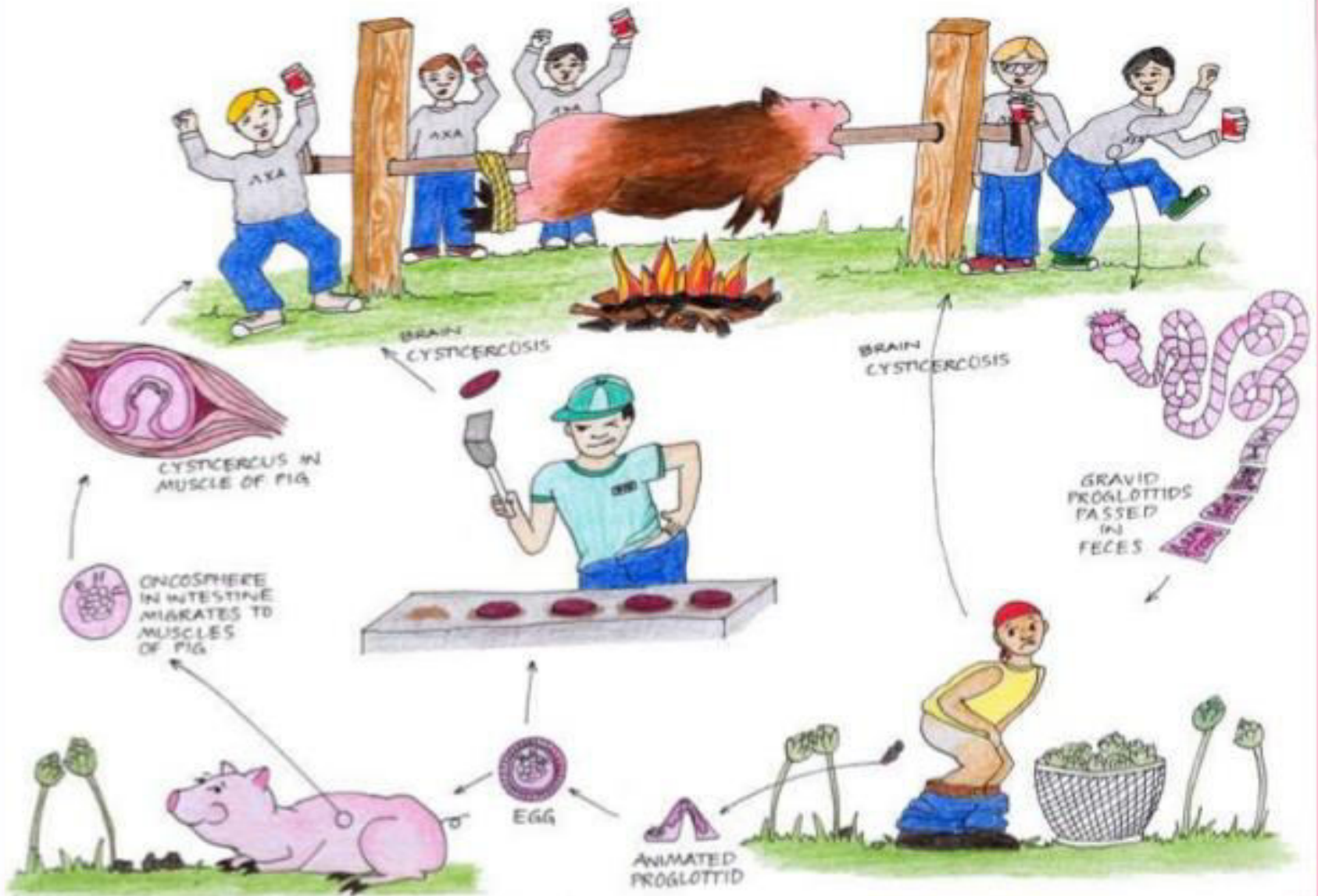


# LIFE CYCLE

---

# Life Cycle of *Taenia solium*







## TAENIASIS

SCOLEX  
ATTACHES TO  
MUCOSA

2 MONTHS OF  
INFECTION

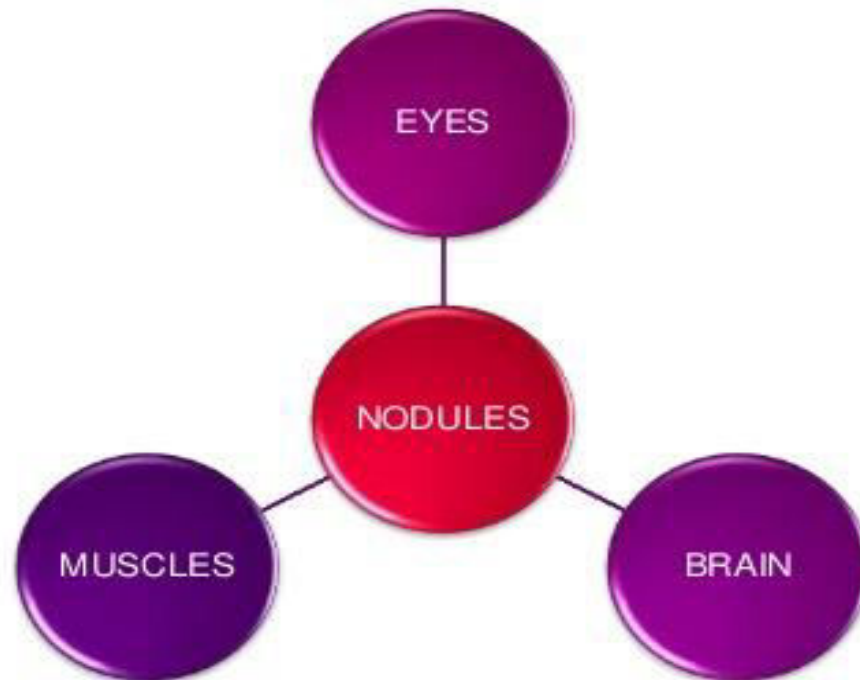
GRAVID  
PROGLOTTIDS  
IN FAECES  
(60,000) EGGS

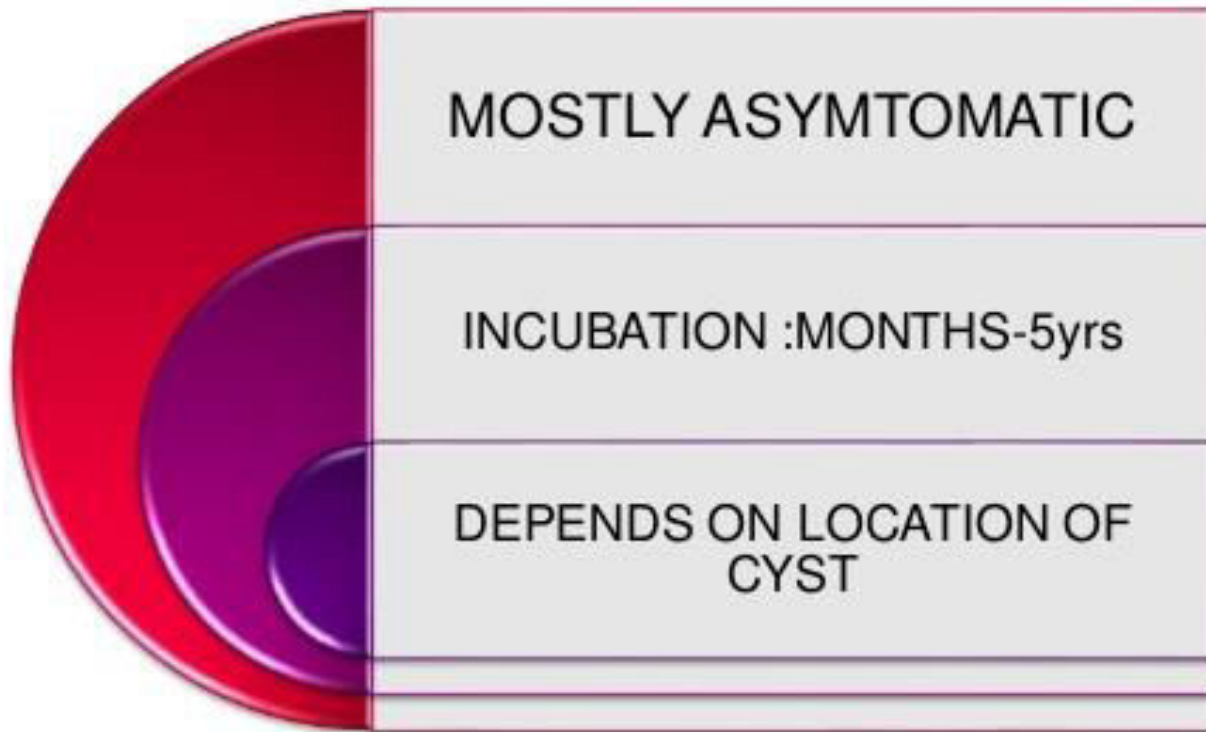
MINOR  
SYMPTOMS-  
ABDOMINAL  
PAIN  
DIARRHOEA  
NAUSEA OR  
ASYMPTOMATIC

# Pathogenesis



# CYSTICERCOSIS





# Clinical Manifestation

---

# SUBCUTANEOUS



- The subcutaneous nodules are usually found in head, limbs, neck, abdomen and back. They are movable and painless.

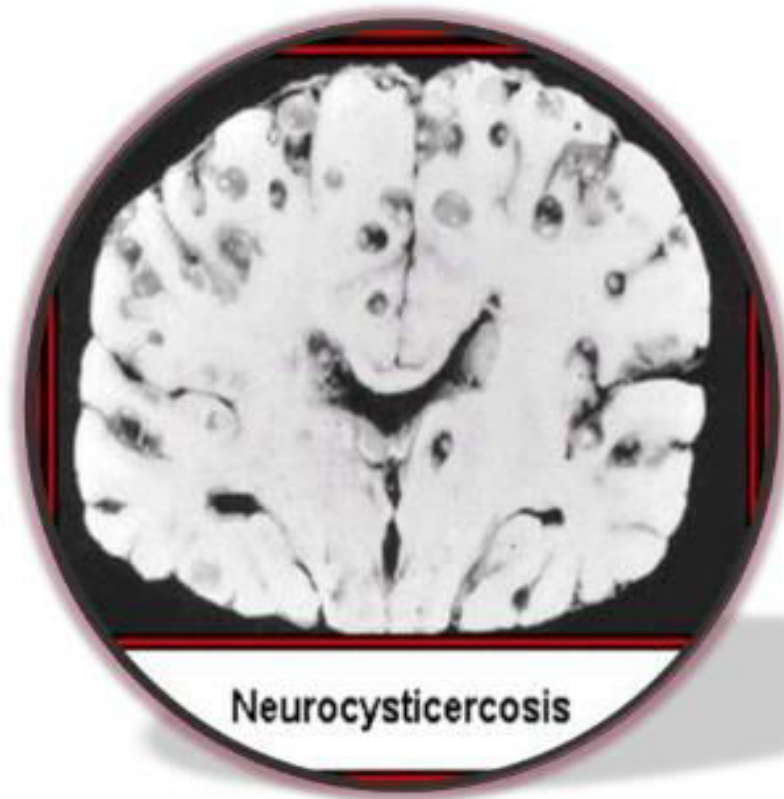


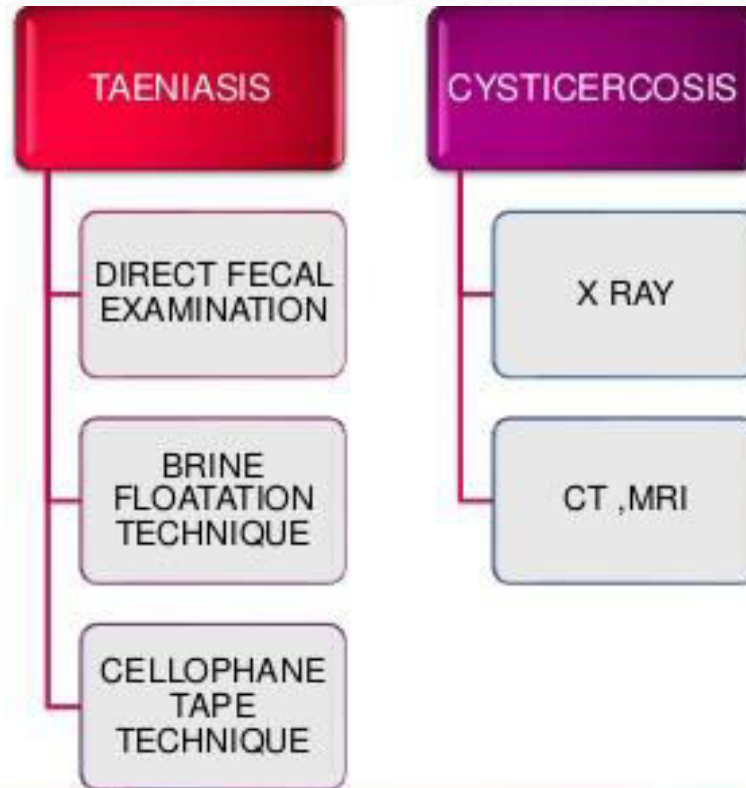
## CYSTICERCOSIS IN TONGUE





# NEUROCYSTICERCOSIS





Immunological tests are done only for reference-ELISA



# Diagonosis

albendazole

praziquantel



# Treatment

---



# Prevention

---





**Thank You**

---